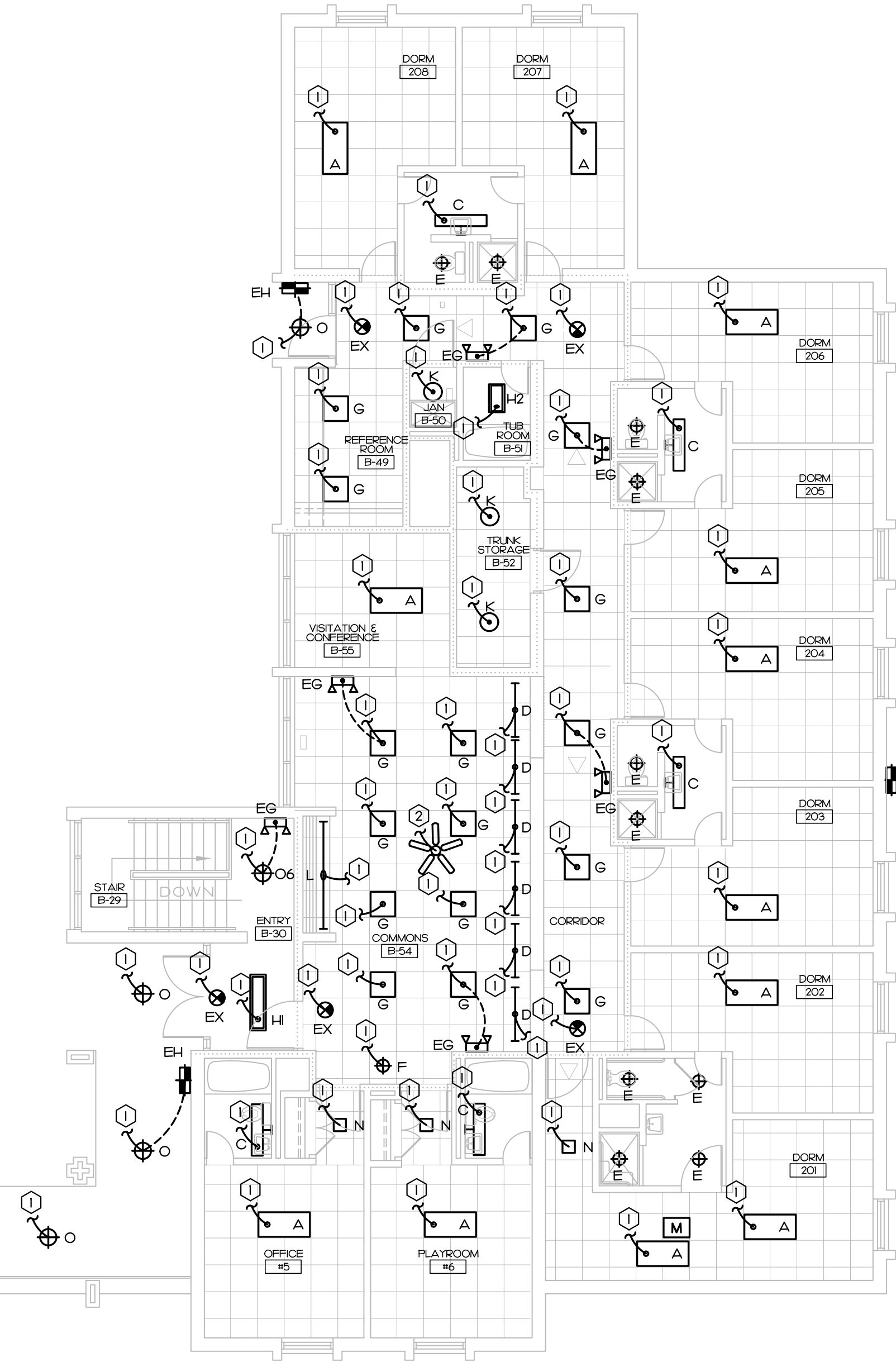
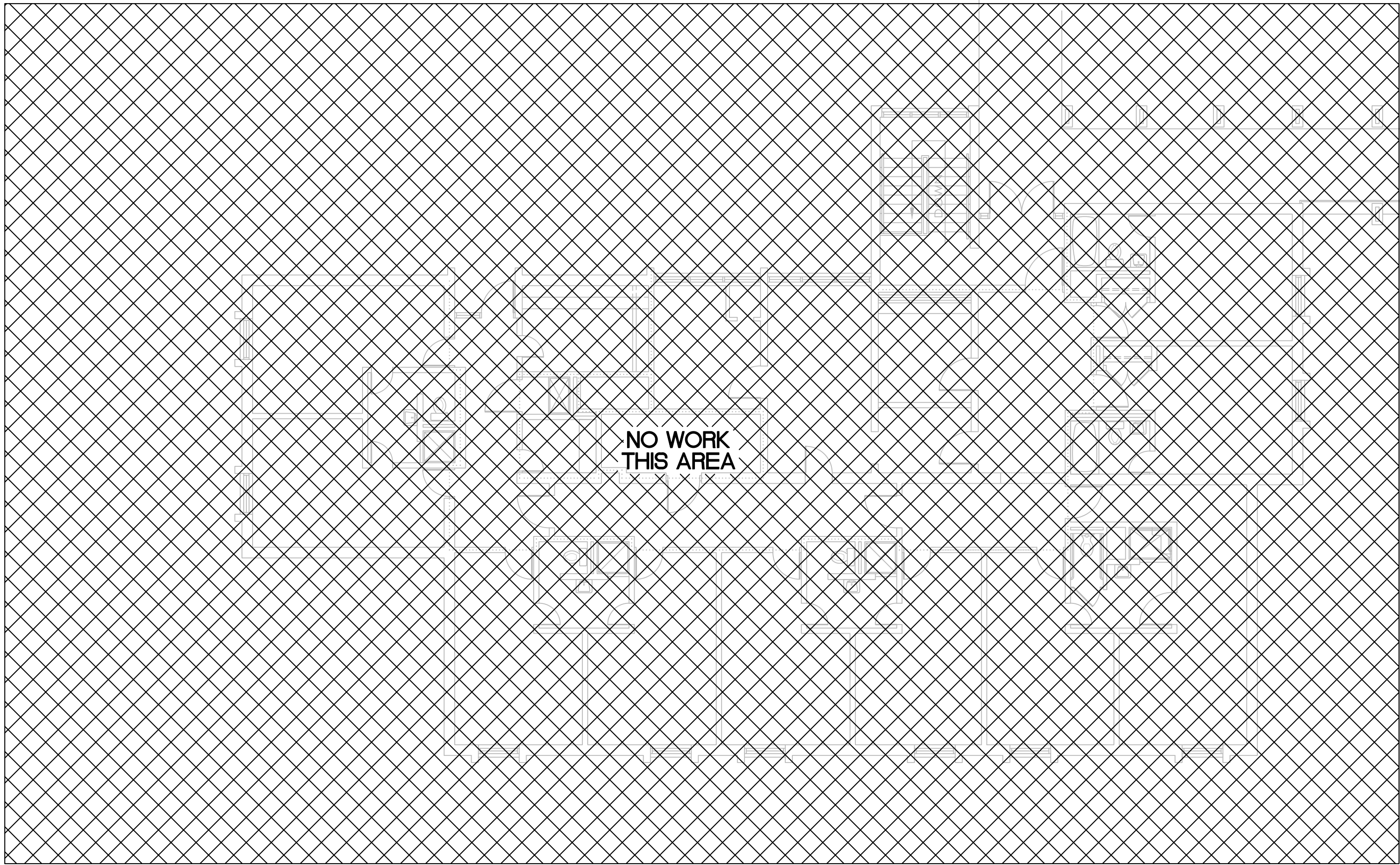


KEY NOTES

- ① CONNECT NEW FIXTURE TO EXISTING LIGHTING AND SWITCHING CIRCUIT IN THIS AREA AVAILABLE FROM DEMOLITION
- ② EXISTING FAN TO BE REINSTALLED IN EXISTING LOCATION AFTER DEMOLITION. CONNECT TO EXISTING POWER AND SWITCHING CIRCUITS
- ③ FIXTURE TO BE CONNECTED TO EXISTING EXTERIOR LIGHTING CIRCUIT. CONNECT INTEGRAL PHOTOCELL CONTROL AHEAD OF NORMAL POWER

NOTES:

- L THE CEILING AREA IN THE HALLWAY AND COMMON SPACES OPEN TO THE HALLWAY WILL BE 1-HOUR RATED. TENTING AND PROTECTION OF THE LIGHT FIXTURES IN THESE AREAS WILL BE THE RESPONSIBILITY OF THE GENERAL CONTRACTOR.



LIGHTING PLAN - BUILDING D2

SCALE: 1/8" = 1'-0"

1

IMEG
www.imegcorp.com
3221 BLUE RIDGE ROAD, STE. 113
RALEIGH, NC 27612
P: 919.571.1111
F: 919.571.1111
North Carolina Design Registration #F-1507
PROJECT # 24048

0 1 2 3
FEET
SCALE IN INCHES

| REVISIONS | FOR CONSTRUCTION | DATE |
|-----------|------------------|---------|
| | | 5/27/25 |
| | | |
| | | |
| | | |

ATLANTEC
ENGINEERS, PA
3221 BLUE RIDGE ROAD, SUITE 113
RALEIGH, NC 27612
919.571.1111
24048

IMEG
CONSULTANTS CORP.
No. F-1507
PROFESSIONAL
SEAL 17382
ENGINEER
DAVID J. WHITNEY
5/27/25

PREPARED FOR:
NC DEPARTMENT
OF INSTRUCTION
SCO #
24-27792-01A

GOVERNOR MOREHEAD SCHOOL
SPRINKLER, ADA TOILET, LIGHTING
UPGRADES FOR DORMS A, B, + D
RALEIGH, NC

CONTENTS:
BUILDING D SECOND
FLOOR ELECTRICAL
PLAN

DATE:
May 27, 2025

DESIGNER: SWM
ENGINEER: DJW

SHEET NO.
E-104
OF